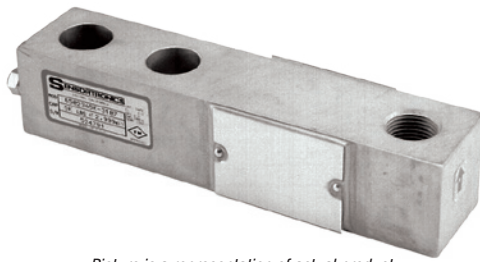
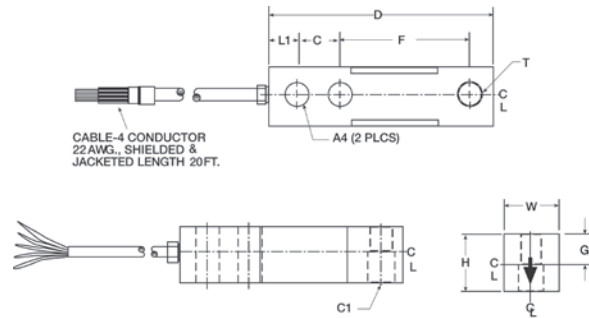


# 65023A

Single-ended Shear Beam, Alloy Steel, NTEP Certified 1:5000 Class III Multiple Cell, IP67



Picture is a representation of actual product



## Specifications

<p><b>Full Scale Output:</b> 3.0 mV/V</p> <p><b>Output Resistance:</b> 349-355 ohms</p> <p><b>Input Resistance:</b> 343-357 ohms</p> <p><b>Material/Finish:</b> High-alloy steel, nickel plated</p> <p><b>Temperature:</b> Compensated range 14° F to 104° F (-10° C to 40° C) Operating range -40° F to 150° F (-40° C to 65° C)</p>	<p><b>Manufacturer Model Number:</b> 65023-XX-X107 (threaded) 65023-XX (thru)</p> <p><b>Safe Overload:</b> 150% full scale</p> <p><b>Safe Sideload:</b> 100% full scale</p> <p><b>Rated Excitation:</b> 5-10 VDC (15 V maximum)</p> <p><b>Nonlinearity:</b> 0.03% full scale</p> <p><b>Hysteresis:</b> 0.02% full scale</p>	<p><b>Insulation Resistance:</b> 5,000 megohms</p> <p><b>Deflection at Capacity:</b> 500 lb-1,500 lb=0.013 in (0.33 mm), 1,000 lb-5,000 lb=0.017 in-0.025 in (0.42 mm-0.64 mm), 5,000 lb-10,000 lb=0.025 in-0.035 in (0.64 mm-0.89 mm), 15,000 lb-20,000 lb=0.048 in-0.013 in (1.22 mm-0.33 mm)</p> <p><b>Seal Type:</b> Environmentally sealed, IP67</p>	<p><b>Cable Length:</b> 20 ft (6.1 m)</p> <p><b>Cable Diameter:</b> 0.200 polyurethane jacket</p> <p><b>Cable Color Code:</b> Red .....+ Excitation Black.....- Excitation Green .....+ Signal White .....- Signal</p> <p><b>Warranty:</b> One-year limited warranty</p> <p><b>Approvals:</b> </p>
---	---	---	--

## Dimensions

RATED CAPACITY	T	L1	C1	W	H	D	C	F	G
<b>lb/in</b>									
250-500	1/2-20 UNF-2B	0.62	0.53	1.25	1.00	5.12	1.00	3.00	0.50
1,000-5,000 SE*	1/2-20 UNF-2B	0.62	0.53	1.25	1.25	5.12	1.00	3.00	0.62
5,000 LE** -10,000	3/4-16 UNF-2B	0.75	0.78	1.50	1.50	6.75	1.50	3.75	0.75
15,000-20,000	1-14 UNS-2B	1.00	1.03	2.00	2.00	8.88	2.00	4.88	1.00
<b>kg/mm</b>									
226.8	1/2-20 UNF-2B	15.8	13.5	31.8	25.4	130.1	25.4	76.2	12.7
453.6-1,814.4	1/2-20 UNF-2B	15.8	13.5	31.8	31.8	130.1	25.4	76.2	12.7
2,268.0-4,535.9	3/4-16 UNF-2B	19.1	19.8	38.1	38.1	171.5	38.1	95.3	19.1
6,803.9-9,071.9	1-14 UNS-2B	25.4	26.2	50.8	50.8	225.6	50.8	124.0	25.4

## Order Information

LOAD RATING		PART #	EST. SHIPPING WEIGHT	PRICE
<b>Threaded Hole, NTEP Certified 1:5000</b>				
1,000 lb	(453.6 kg)	21507	3 lb	Consult
1,500 lb	(680.4 kg)	69832	3 lb	Consult
2,000 lb	(907.2 kg)	21508	3 lb	Consult
2,500 lb	(1,134.0 kg)	21509	3 lb	Consult
3,000 lb	(1,360.8 kg)	21510	3 lb	Consult
4,000 lb	(1,814.4 kg)	21511	3 lb	Consult
5,000 lb SE*	(2,268.0 kg)	102884	3 lb	Consult
5,000 lb LE**	(2,268.0 kg)	21512	5 lb	Consult
10,000 lb	(4,535.9 kg)	21513	5 lb	Consult
<b>Threaded Hole, Non-NTEP Certified</b>				
250 lb	(113.4 kg)	176426	3 lb	Consult
500 lb	(226.8 kg)	17125	3 lb	Consult
15,000 lb	(6,803.9 kg)	17155	9 lb	Consult
20,000 lb	(9,071.9 kg)	17159	10 lb	Consult

\*SE refers to small envelope

\*\*LE refers to large envelope

## Interchangeable Products

MANUFACTURER	MODEL	PAGE #
Rice Lake Weighing Systems	RL35023 (threaded version)	135
VPG Celtron®	SQB	200
Rice Lake Weighing Systems	RL30002 (thru hole version)	130

## Weigh Module Available

MANUFACTURER	MODEL	PAGE #
Rice Lake Weighing Systems	RL50210	52
Rice Lake Weighing Systems	RL1800 Series	62