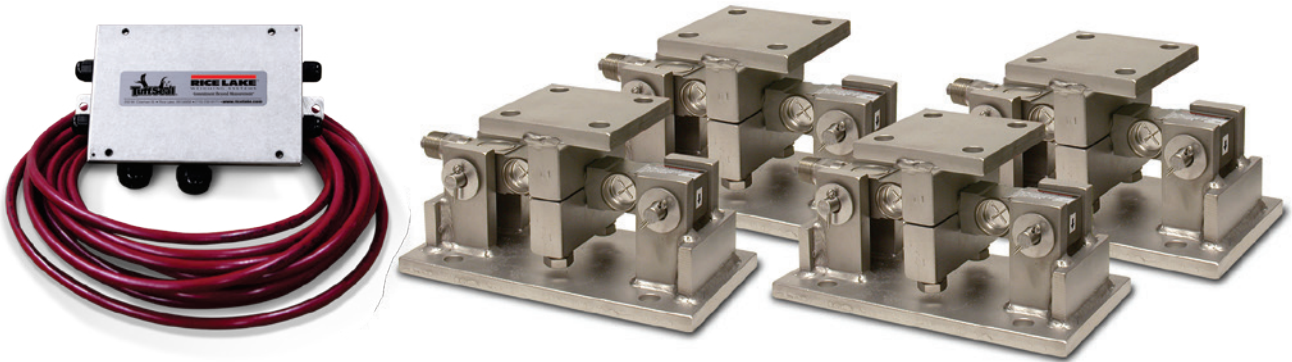


## RL1600 HE

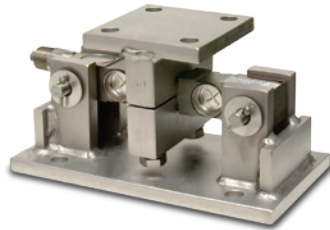
Medium-capacity Weigh Modules



Available in configurations with three or four mounting assemblies.  
Picture is a representation of actual product

The RL1600 HE mounting module kit utilizes several Rice Lake Weighing Systems components to provide an unmatched level of performance in tank and hopper weighing applications. The RL1600 HE kit is ideally suited for indoor and outdoor process control operations in the medium-capacity ranges. Each module incorporates self-checking capabilities for thermal expansion and contraction.

Fabricated stainless steel module with  
RL75016WHE double-ended beam load cell.



### Standard Features

- Capacities (per module): 1,000 lb-25,000 lb (453.6 kg-11,339.8 kg)
- All stainless steel construction
- Self-checking, easy-to-use design allows module to be bolted directly to tank leg without requiring additional mounting plates or load buttons
- Hermetically sealed IP66/69K protected load cells
- Double-ended shear beam design, center loaded

### Applications

- Medium-capacity tanks, bins and hoppers
- Bulk material management
- Ingredient batching, mixing and blending

### Complete Kit Includes

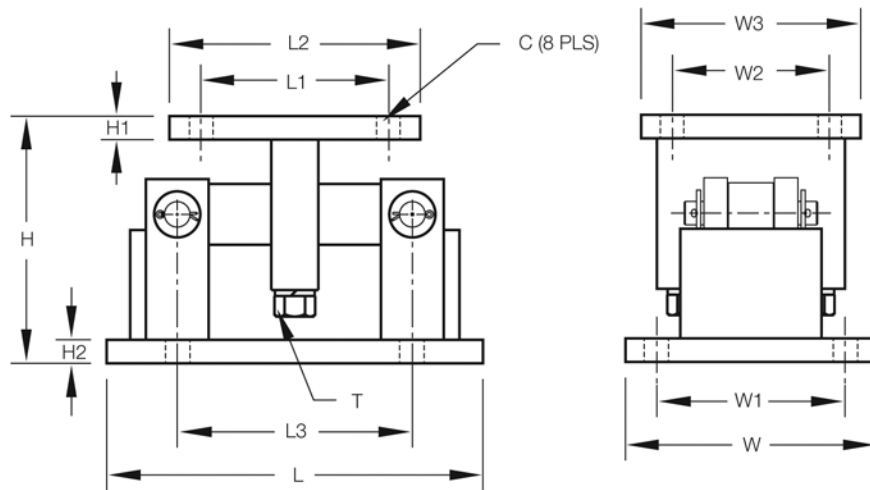
- 1 JB4SS NEMA Type 4X stainless steel signal trim junction box
- 3 or 4 RL1600 stainless steel compression mounts
- 3 or 4 RL75016WHE stainless steel, hermetically sealed double-ended shear beam load cells
- 25 ft of our hostile environment EL147HE SURVIVOR® load cell cable

### Load Cell Certifications



# RL1600 HE

Medium-capacity Weigh Modules



## Dimensions

RATED CAPACITY	C	H	H1	H2	L	L1	L2	L3	T	W	W1	W2	W3
<b>lb/inches</b>													
1,000-5,000	0.56	5.00	0.50	0.50	9.25	2.75	4.00	6.25	1/2-13 UNC	5.00	3.75	2.75	4.00
10,000-25,000	0.78	7.87	0.75	0.75	12.00	6.00	8.00	7.50	3/4-10 UNC	8.00	6.00	6.00	8.00
<b>kg/mm</b>													
453.6-2,268.0	14.2	127.0	12.7	12.7	235.0	69.9	101.6	158.8	1/2-13 UNC	127.0	95.3	69.9	101.6
4,535.9-11,339.8	19.8	199.9	19.1	19.1	304.8	152.4	203.2	190.5	3/4-10 UNC	203.2	152.4	152.4	203.2

## Order Information

LOAD RATING (PER MODULE)	PART #	PRICE
<b>3-Module Kit</b>		
1,000 lb (453.6 kg)	46723	Consult
1,500 lb (680.4 kg)	119673	Consult
2,000 lb (907.2 kg)	119675	Consult
2,500 lb (1,134.0 kg)	46724	Consult
5,000 lb (2,268.0 kg)	46725	Consult
10,000 lb (4,535.9 kg)	46726	Consult
15,000 lb (6,803.9 kg)	46727	Consult
20,000 lb (9,071.9 kg)	84664	Consult
25,000 lb (11,339.8 kg)	46728	Consult
<b>4-Module Kit</b>		
1,000 lb (453.6 kg)	46729	Consult
1,500 lb (680.4 kg)	119674	Consult
2,000 lb (907.2 kg)	119676	Consult
2,500 lb (1,134.0 kg)	46730	Consult
5,000 lb (2,268.0 kg)	46731	Consult
10,000 lb (4,535.9 kg)	46732	Consult
15,000 lb (6,803.9 kg)	46733	Consult
20,000 lb (9,071.9 kg)	84665	Consult
25,000 lb (11,339.8 kg)	46734	Consult

## Order Information

LOAD RATING (PER MODULE)	PART #	PRICE
<b>Single Module (Does Not Include Load Cell)</b>		
1,000-5,000 lb (453.6-2,268.0 kg)	17813	Consult
10,000-25,000 lb (4,535.9-11,339.8 kg)	17815	Consult
<b>Dummy Load Cells (Mild Steel)</b>		
1,000-5,000 lb (453.6-2,268.0 kg)	18236	Consult
10,000-25,000 lb (4,535.9-11,339.8 kg)	18237	Consult

## Shims\*

	PART #	PRICE
<b>1,000 lb-5,000 lb</b>		
0.0625	150852	Consult
0.125	150853	Consult
0.250	150854	Consult
<b>10,000 lb-25,000 lb</b>		
0.0625	150855	Consult
0.125	150856	Consult
0.250	150857	Consult
<b>50,000 lb-75,000 lb</b>		
0.0625	150858	Consult
0.125	150859	Consult
0.250	150861	Consult

\*Shims match the top plate