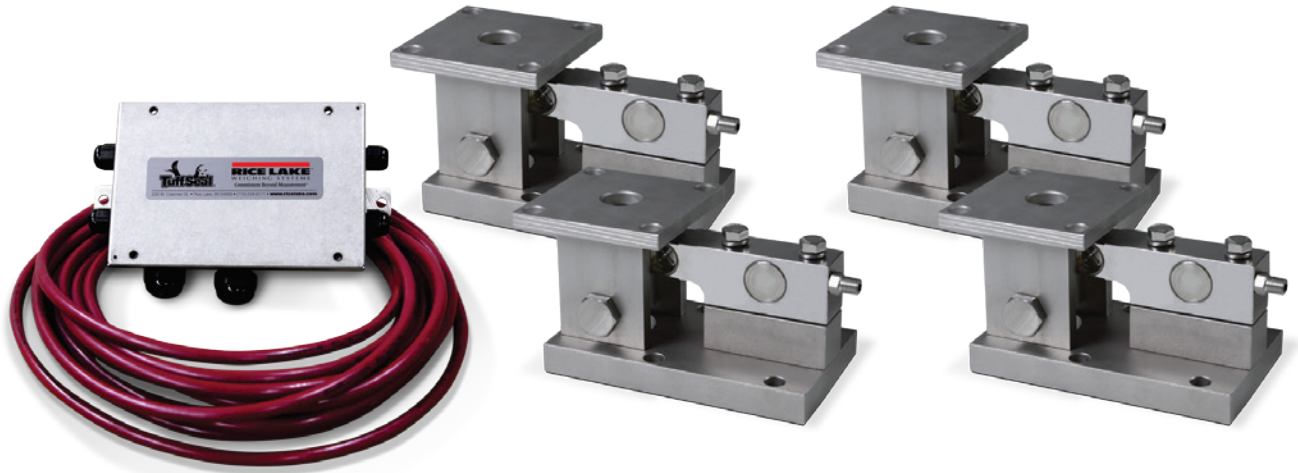


## RL1900 Series

Stainless Steel Weigh Modules

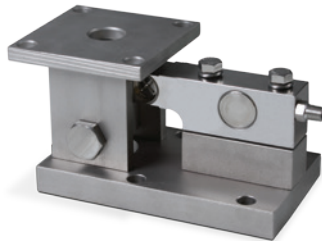


Available in configurations with three or four mounting assemblies.

Picture is a representation of actual product

The RL1900 Series weigh module kit utilizes several Rice Lake Weighing Systems components to provide an unmatched level of performance in tank and hopper weighing applications. The RL1900 kit is ideally suited for tank, hopper and bin weighing operations with medium-range capacities. Each module combines multi-directional movement and self-checking capabilities. The welded seal, stainless steel RLSSB load cell withstands washdown and corrosive environments that may present problems to other cells.

Module with welded-seal RLSSB single-ended beam load cell.



### Standard Features

- NTEP Certified load cells, 1:5000 d, Class III single cell
- Capacities (per module): 1,000 lb-10,000 lb (453.6 kg-4,535.9 kg)
- 304 stainless steel construction
- Center-pivoted, tension loading design
- Welded-seal stainless steel load cells, IP67
- Self-checking, multi-directional movement
- Easy load cell replacement
- Load is suspended on high-strength bolt instead of wire rope
- Design incorporates spherical washers

### Applications

- Medium-capacity tanks, bins and hoppers
- Washdown or corrosive applications

### Optional Features

- Also compatible with RTI SSB load cells

### Complete Kit Includes

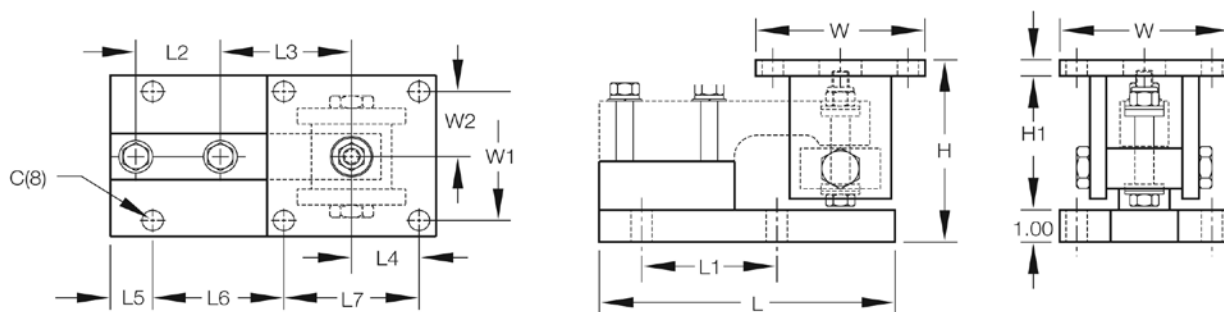
- 1 JB4SS NEMA Type 4X stainless steel signal trim junction box
- 3 or 4 RL1900 stainless steel compression mounts
- 3 or 4 RLSSB welded stainless steel single-ended beam load cells
- 25 ft of our hostile environment EL147HE SURVIVOR® load cell cable

### Load Cell Certifications



# RL1900 Series

Stainless Steel Weigh Modules



## Dimensions

RATED CAPACITY	C	H MIN/MAX	H1	L	L1	L2	L3	L4	L5	L6	L7	W	W1	W2
<b>lb/inches</b>														
1,000-5,000	0.62	5.38/5.62	0.50	8.75	4.00	2.50	3.88	2.00	1.12	4.00	4.00	5.00	4.00	2.00
10,000	0.81	6.88/7.50	1.00	9.75	5.00	2.63	4.88	2.25	1.00	5.00	4.50	6.00	4.50	2.25
<b>kg/mm</b>														
453.6-2,268.0	15.8	136.7/142.9	12.7	222.3	101.6	63.5	98.6	50.8	28.4	101.6	101.6	127.0	101.6	50.8
4,535.9	20.6	174.8/190.5	25.4	247.7	127.0	66.8	124.0	57.2	25.4	127.0	114.3	152.4	114.3	57.2

## Order Information

LOAD RATING (PER MODULE)	PART #	PRICE
<b>Single Module (Does NOT include Load Cell)</b>		
1,000 lb-5,000 lb (453.6 kg-2,268.0 kg)	17841	Consult
10,000 lb (4,535.9 kg)	17843	Consult
<b>3-Module Kit</b>		
1,000 lb (453.6 kg)	18109	Consult
2,000 lb (907.2 kg)	18110	Consult
5,000 lb (2,268.0 kg)	18111	Consult
10,000 lb (4,535.9 kg)	18112	Consult
<b>4-Module Kit</b>		
1,000 lb (453.6 kg)	18113	Consult
2,000 lb (907.2 kg)	18114	Consult
5,000 lb (2,268.0 kg)	18115	Consult
10,000 lb (4,535.9 kg)	18116	Consult